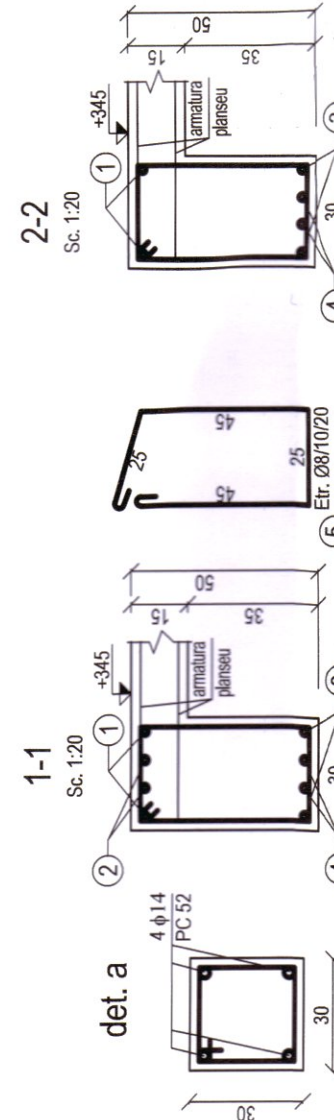
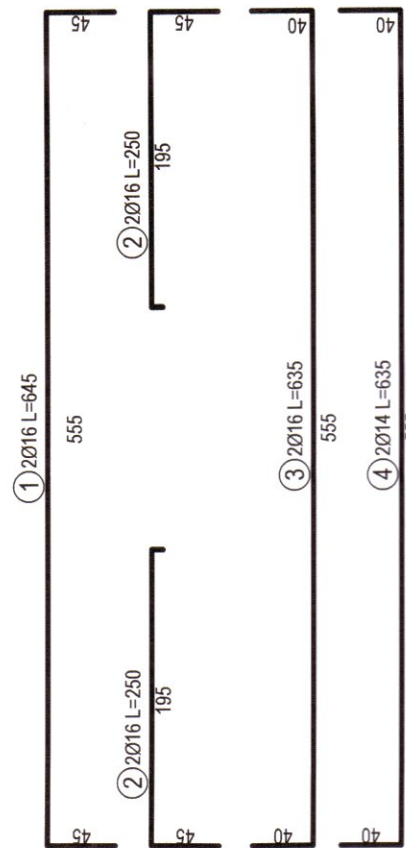
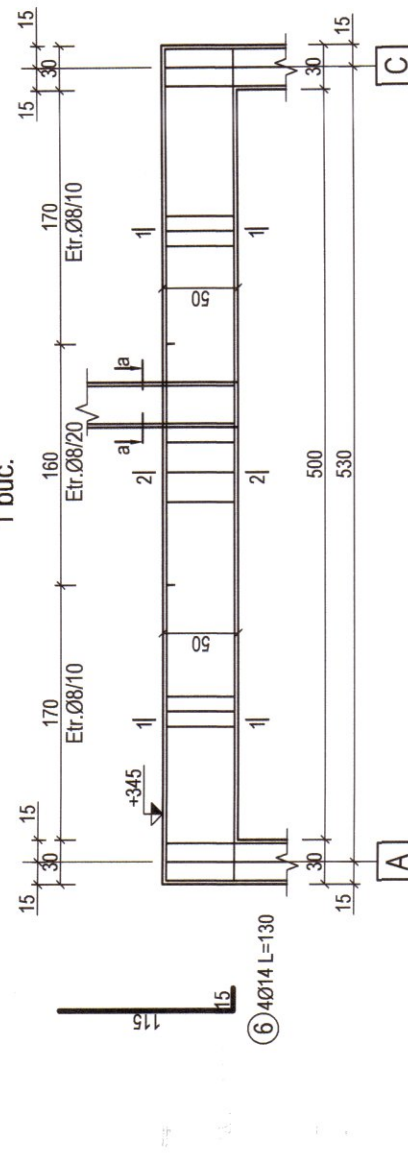
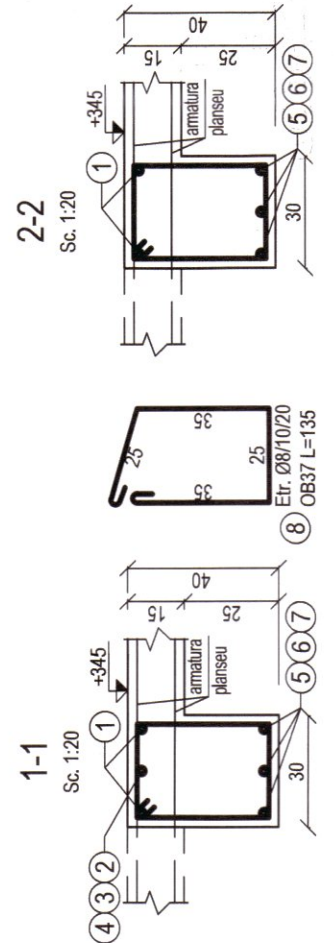
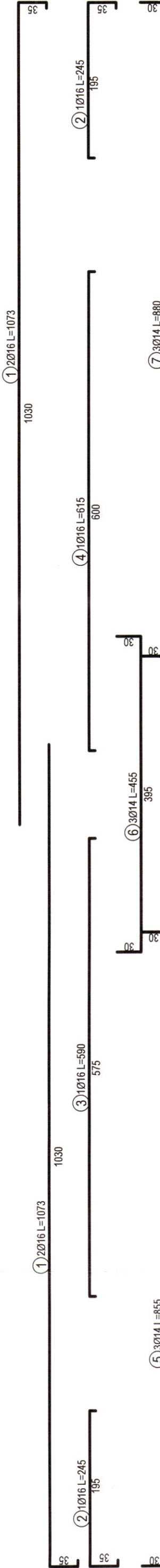
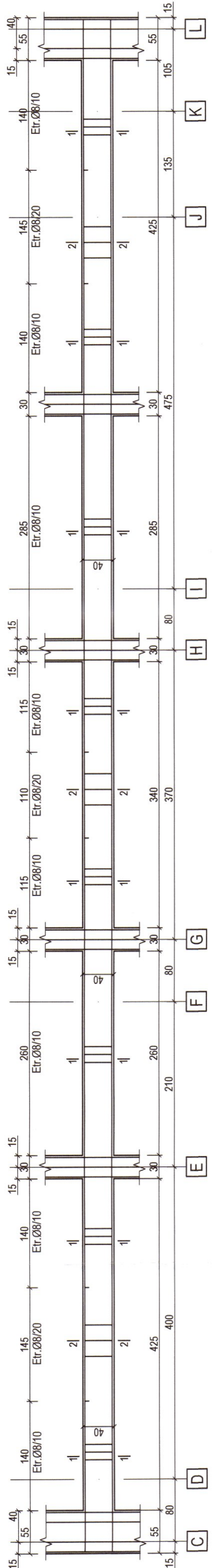


Armare G1 30x50, ax 1



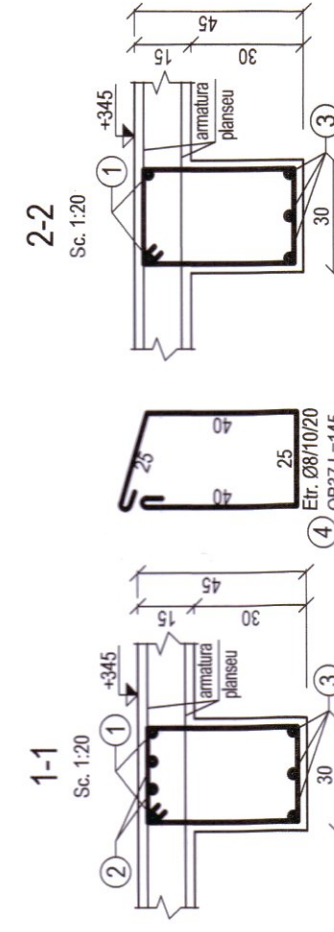
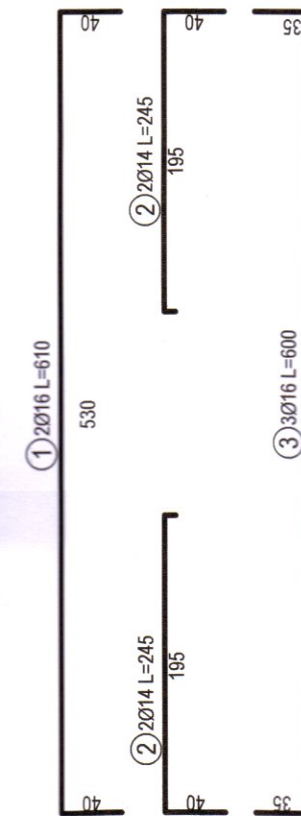
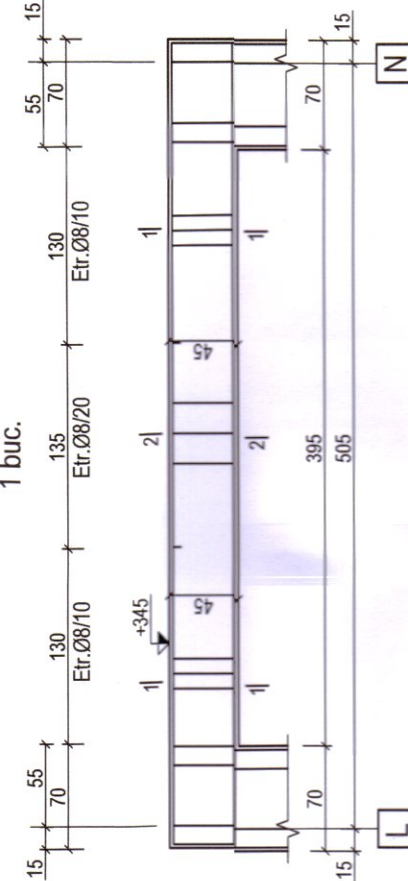
Armare G.2 30x40, ax 2

1 buc.



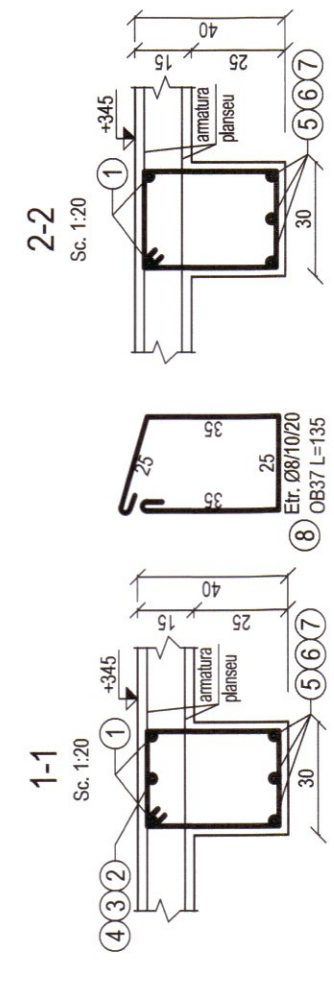
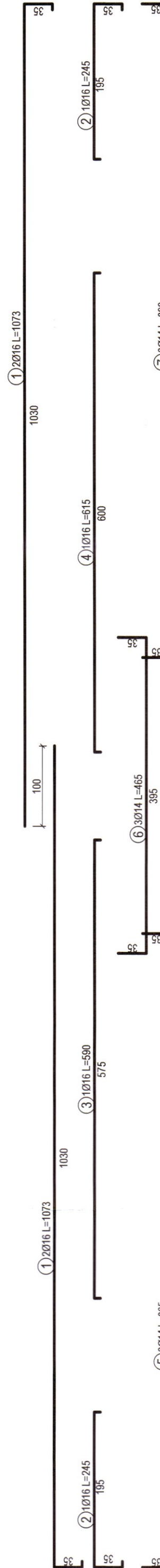
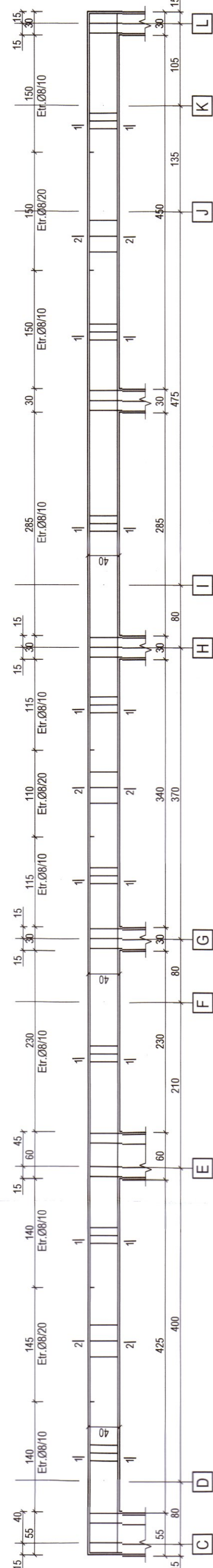
Amare G4 30x45. ax 3

1 buc.



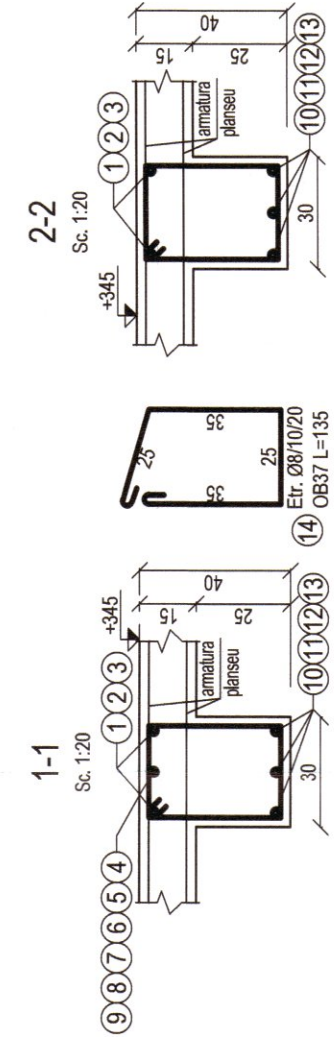
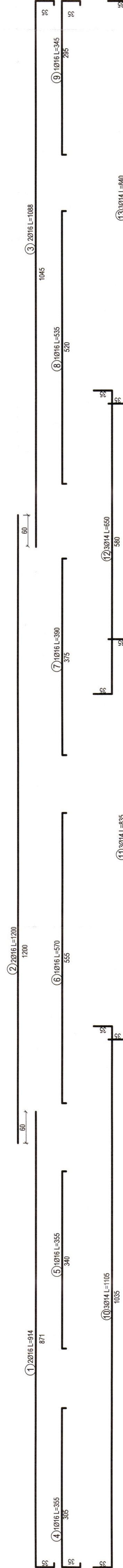
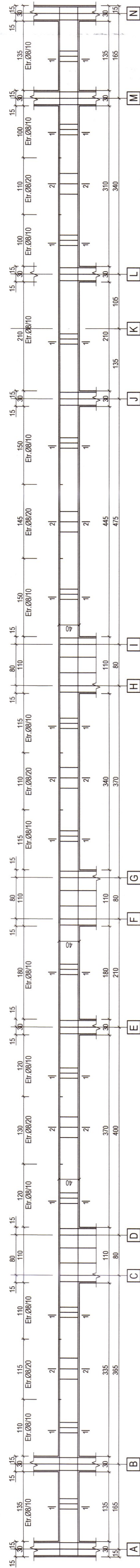
Armare G.5 30x40, ax 4

1 hrc



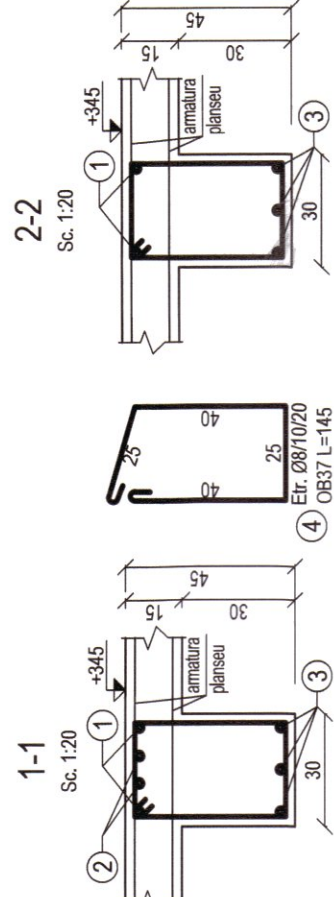
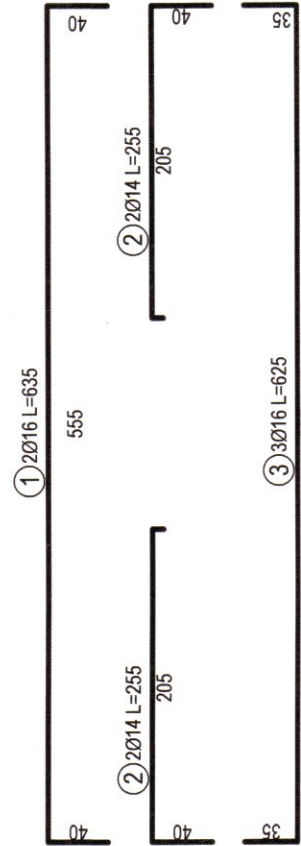
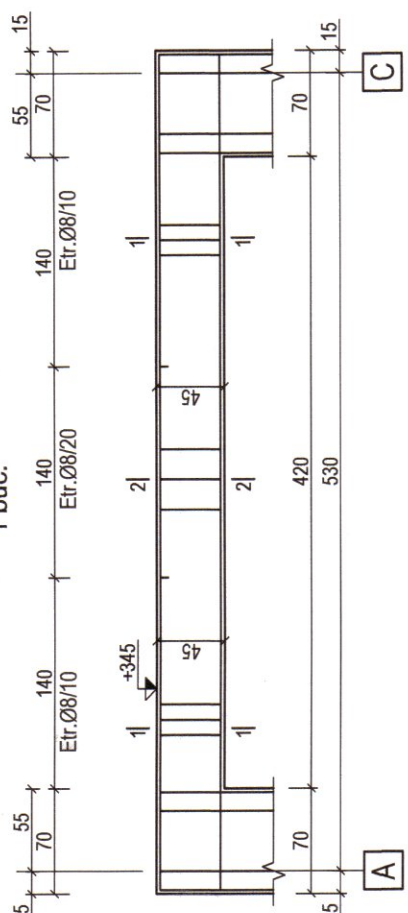
Armare G.6 30x40, ax 5

1 hr.



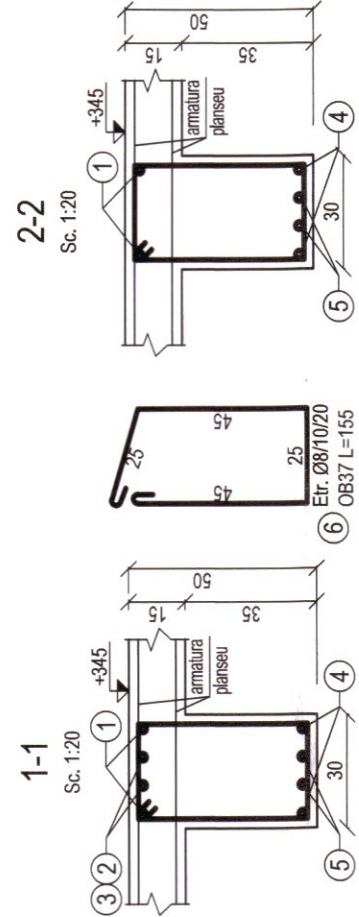
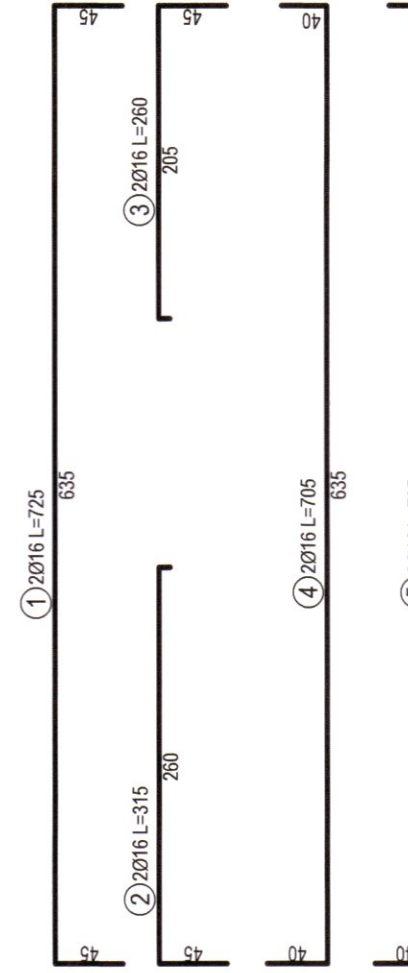
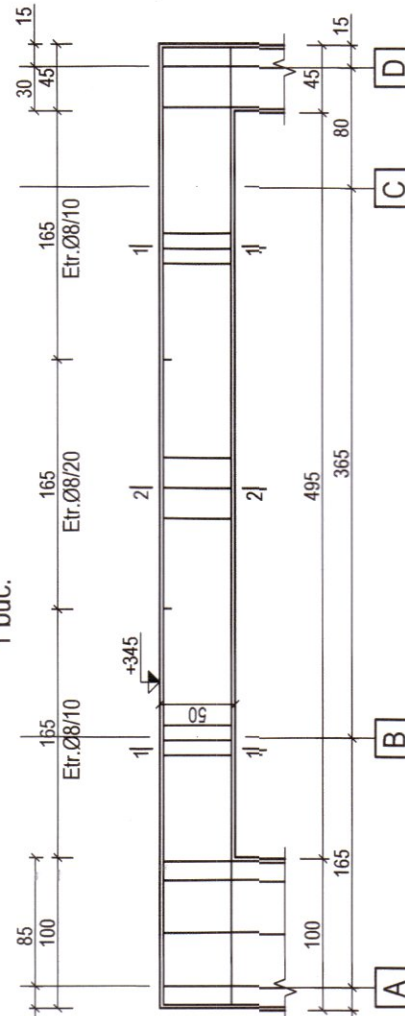
Armare G3 30x45, ax 3

1 buc.



Armare G8 30x50, ax 8

1 buc.



NOTA:

CONFORM HG766/1997, CONSTRUCTIA SE INCADREAZA IN CATEGORIA DE IMPORTANTA "C".
CONFORM D3000.4/2010, ZONA SEISMICA ESTE CARACTERIZATA DE $z_0 = 0.20$; $T_0 = 1.0$ sec.