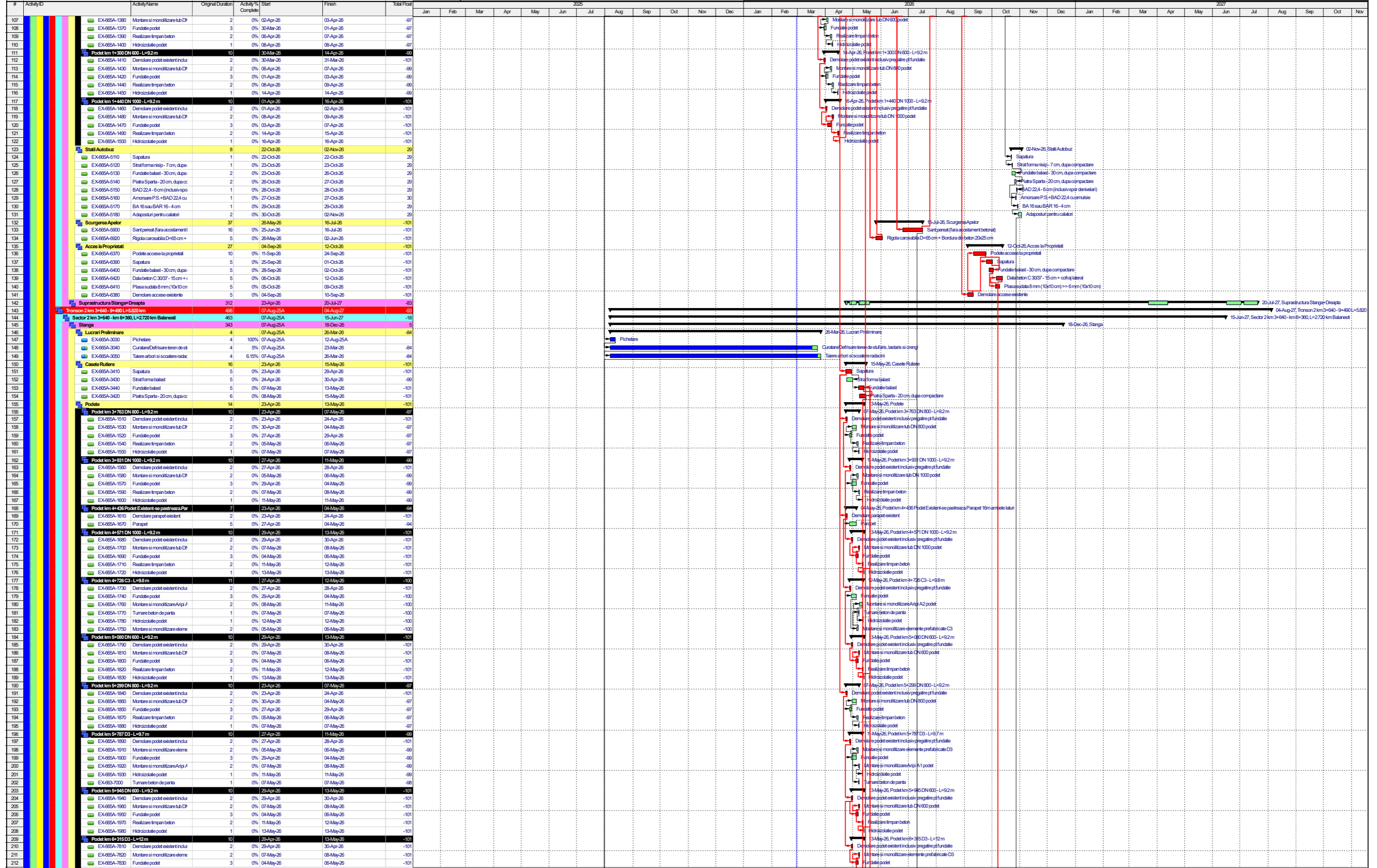
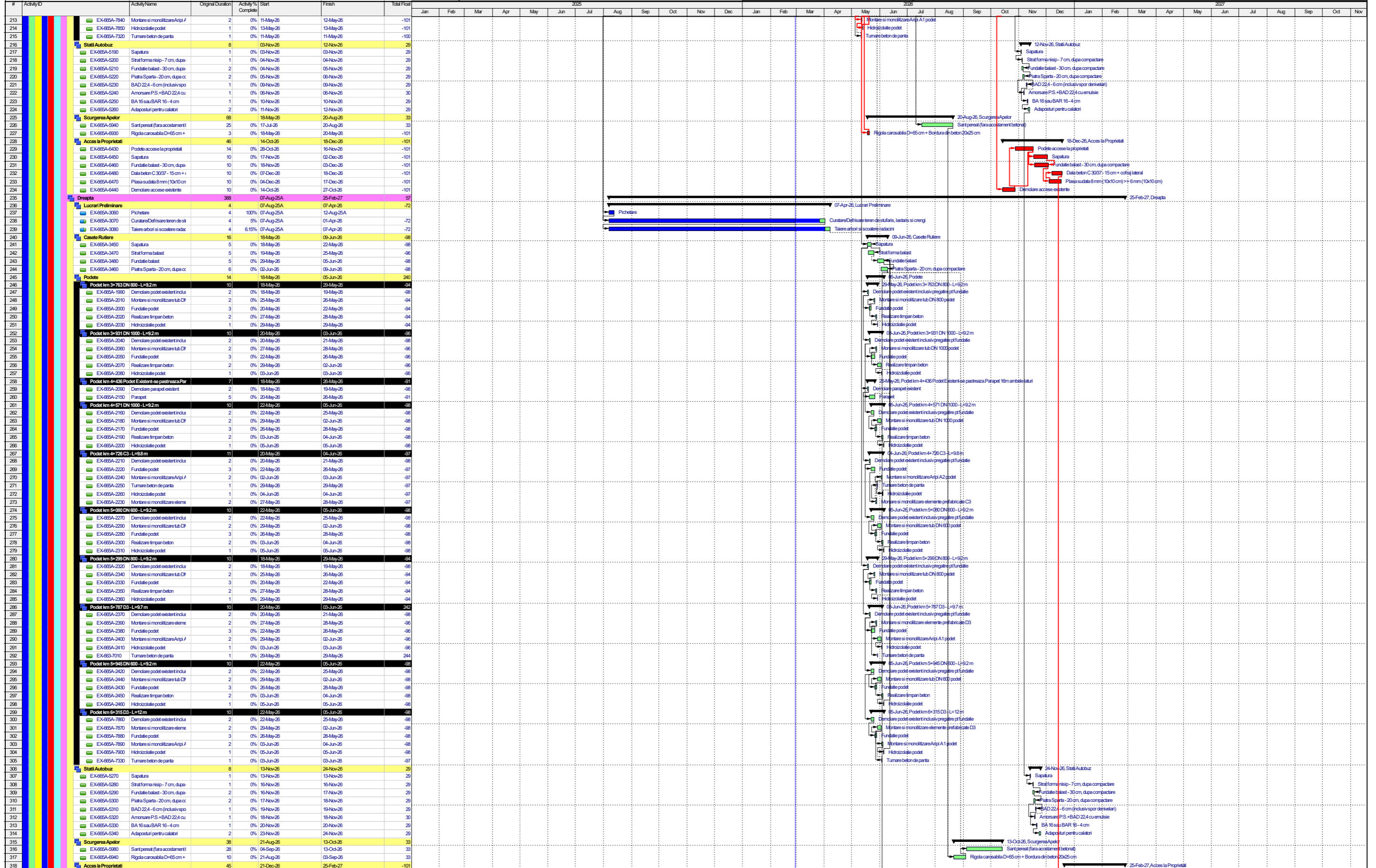


■ Activities
 ■ Actual Work
 ■ Critical Remaining Work
 ■ Critical
 ■ Remaining Work
 ◆ Milestone



█ Activities
 █ Actual Work
 █ Critical Remaining Work
 █ Critical
 █ Remaining Work
 ◆ Milestone



Activity ID	Activity Name	Original Duration	Activity % Complete	Start	Finish	Total Float
213	EX-665A-7840 Montare si monolitizare Arpa A1 podet	2	0%	11-May-26	12-May-26	-101
214	EX-665A-7850 Hidrozolatie podet	1	0%	13-May-26	13-May-26	-101
215	EX-665A-7320 Turnare beton de parita	1	0%	11-May-26	11-May-26	-100
216	Stati Autobuz	8		03-Nov-26	12-Nov-26	29
217	EX-665A-5190 Sapatura	1	0%	03-Nov-26	03-Nov-26	29
218	EX-665A-5200 Strat format nisip - 7 cm, dupa	1	0%	04-Nov-26	04-Nov-26	29
219	EX-665A-5210 Fundatie balast - 30 cm, dupa	2	0%	04-Nov-26	05-Nov-26	29
220	EX-665A-5220 Piatra Sparta - 20 cm, dupa cc	2	0%	05-Nov-26	06-Nov-26	29
221	EX-665A-5230 BAD 22.4 - 6 cm (inclusiv spor de nivelare)	1	0%	09-Nov-26	09-Nov-26	29
222	EX-665A-5240 Amorsare P.S.+BAD 22.4 cu	1	0%	06-Nov-26	06-Nov-26	30
223	EX-665A-5250 BA 16 sau BAR 16 - 4 cm	1	0%	10-Nov-26	10-Nov-26	29
224	EX-665A-5260 Adaposturi pentru calatori	2	0%	11-Nov-26	12-Nov-26	29
225	Scurgere Apelor	68		18-May-26	20-Aug-26	33
226	EX-665A-5940 Sant peresit (fara acostament)	25	0%	17-Jul-26	20-Aug-26	33
227	EX-665A-6930 Rigola carosabila D=65 cm +	3	0%	18-May-26	20-May-26	-101
228	Acces la Proprietati	46		14-Oct-26	18-Dec-26	-101
229	EX-665A-6430 Podete accese la proprietati	14	0%	28-Oct-26	16-Nov-26	-101
230	EX-665A-6450 Sapatura	10	0%	17-Nov-26	02-Dec-26	-101
231	EX-665A-6480 Fundatie balast - 30 cm, dupa	10	0%	18-Nov-26	03-Dec-26	-101
232	EX-665A-6480 Dala beton C 30/37 - 15 cm + i	10	0%	18-Dec-26	18-Dec-26	-101
233	EX-665A-6470 Plasa sudata 8 mm (10x10 cm)	10	0%	04-Dec-26	17-Dec-26	-101
234	EX-665A-6440 Demolare accese existente	10	0%	14-Oct-26	27-Oct-26	-101
235	Drapta	388		07-Aug-25A	25-Feb-27	57
236	Lucrari Preliminare	4		07-Apr-26	07-Apr-26	-72
237	EX-665A-3060 Pichetare	4	100%	07-Aug-25A	12-Aug-25A	-72
238	EX-665A-3070 Curatare Defrisare teren de st	4	5%	07-Aug-25A	01-Apr-26	-72
239	EX-665A-3080 Taiere arbori si scoatere radaci	4	6.15%	07-Aug-25A	07-Apr-26	-72
240	Casute Rutiere	16		18-May-26	09-Jun-26	-68
241	EX-665A-3460 Sapatura	5	0%	18-May-26	22-May-26	-68
242	EX-665A-3470 Strat forma balast	5	0%	19-May-26	25-May-26	-68
243	EX-665A-3480 Fundatie balast	5	0%	29-May-26	05-Jun-26	-68
244	EX-665A-3460 Piatra Sparta - 20 cm, dupa cc	6	0%	02-Jun-26	09-Jun-26	-68
245	Podete	14		18-May-26	05-Jun-26	240
246	Podet km 3+763 DN 800 - L=9.2 m	10		18-May-26	25-May-26	-94
247	EX-665A-1990 Demolare podet existent incluz	2	0%	18-May-26	19-May-26	-98
248	EX-665A-2010 Montare si monolitizare tub DP	2	0%	25-May-26	26-May-26	-94
249	EX-665A-2000 Fundatie podet	3	0%	20-May-26	22-May-26	-94
250	EX-665A-2020 Realizare Impan beton	2	0%	27-May-26	28-May-26	-94
251	EX-665A-2030 Hidrozolatie podet	1	0%	29-May-26	29-May-26	-94
252	Podet km 3+931 DN 1000 - L=9.2 m	10		20-May-26	03-Jun-26	-66
253	EX-665A-2040 Demolare podet existent incluz	2	0%	20-May-26	21-May-26	-98
254	EX-665A-2050 Montare si monolitizare tub DP	2	0%	27-May-26	28-May-26	-96
255	EX-665A-2050 Fundatie podet	3	0%	22-May-26	26-May-26	-96
256	EX-665A-2070 Realizare Impan beton	2	0%	29-May-26	02-Jun-26	-96
257	EX-665A-2080 Hidrozolatie podet	1	0%	03-Jun-26	03-Jun-26	-96
258	Podet km 4+436 Podet Existent se pastreaza Par	7		18-May-26	25-May-26	-91
259	EX-665A-2090 Demolare parapet existent	2	0%	18-May-26	19-May-26	-98
260	EX-665A-2150 Parapet	5	0%	20-May-26	26-May-26	-91
261	Podet km 4+571 DN 1000 - L=9.2 m	10		22-May-26	05-Jun-26	-68
262	EX-665A-2160 Demolare podet existent incluz	2	0%	22-May-26	25-May-26	-98
263	EX-665A-2180 Montare si monolitizare tub DP	2	0%	29-May-26	02-Jun-26	-98
264	EX-665A-2170 Fundatie podet	3	0%	26-May-26	28-May-26	-98
265	EX-665A-2190 Realizare Impan beton	2	0%	03-Jun-26	04-Jun-26	-98
266	EX-665A-2200 Hidrozolatie podet	1	0%	05-Jun-26	05-Jun-26	-98
267	Podet km 4+726 C3 - L=9.8 m	11		20-May-26	04-Jun-26	-97
268	EX-665A-2210 Demolare podet existent incluz	2	0%	20-May-26	21-May-26	-98
269	EX-665A-2220 Fundatie podet	3	0%	22-May-26	26-May-26	-97
270	EX-665A-2240 Montare si monolitizare Arpa A1	2	0%	02-Jun-26	03-Jun-26	-97
271	EX-665A-2250 Turnare beton de parita	1	0%	29-May-26	29-May-26	-97
272	EX-665A-2260 Hidrozolatie podet	1	0%	04-Jun-26	04-Jun-26	-97
273	EX-665A-2230 Montare si monolitizare eleme	2	0%	27-May-26	28-May-26	-97
274	Podet km 5+060 DN 800 - L=9.2 m	10		22-May-26	05-Jun-26	-68
275	EX-665A-2270 Demolare podet existent incluz	2	0%	22-May-26	25-May-26	-98
276	EX-665A-2290 Montare si monolitizare tub DP	2	0%	29-May-26	02-Jun-26	-98
277	EX-665A-2280 Fundatie podet	3	0%	26-May-26	28-May-26	-98
278	EX-665A-2300 Realizare Impan beton	2	0%	03-Jun-26	04-Jun-26	-98
279	EX-665A-2310 Hidrozolatie podet	1	0%	05-Jun-26	05-Jun-26	-98
280	Podet km 5+299 DN 800 - L=9.2 m	10		18-May-26	25-May-26	-94
281	EX-665A-2320 Demolare podet existent incluz	2	0%	18-May-26	19-May-26	-98
282	EX-665A-2340 Montare si monolitizare tub DP	2	0%	25-May-26	26-May-26	-94
283	EX-665A-2330 Fundatie podet	3	0%	20-May-26	22-May-26	-94
284	EX-665A-2350 Realizare Impan beton	2	0%	27-May-26	28-May-26	-94
285	EX-665A-2360 Hidrozolatie podet	1	0%	29-May-26	29-May-26	-94
286	Podet km 5+767 D3 - L=9.7 m	10		20-May-26	03-Jun-26	242
287	EX-665A-2370 Demolare podet existent incluz	2	0%	20-May-26	21-May-26	-98
288	EX-665A-2390 Montare si monolitizare eleme	2	0%	27-May-26	28-May-26	-98
289	EX-665A-2380 Fundatie podet	3	0%	22-May-26	26-May-26	-98
290	EX-665A-2400 Montare si monolitizare Arpa A1	2	0%	29-May-26	02-Jun-26	-98
291	EX-665A-2410 Hidrozolatie podet	1	0%	03-Jun-26	03-Jun-26	-98
292	EX-663-7010 Turnare beton de parita	1	0%	29-May-26	29-May-26	244
293	Podet km 5+945 DN 800 - L=9.2 m	10		22-May-26	05-Jun-26	-68
294	EX-665A-2420 Demolare podet existent incluz	2	0%	22-May-26	25-May-26	-98
295	EX-665A-2440 Montare si monolitizare tub DP	2	0%	29-May-26	02-Jun-26	-98
296	EX-665A-2430 Fundatie podet	3	0%	26-May-26	28-May-26	-98
297	EX-665A-2450 Realizare Impan beton	2	0%	03-Jun-26	04-Jun-26	-98
298	EX-665A-2460 Hidrozolatie podet	1	0%	05-Jun-26	05-Jun-26	-98
299	Podet km 6+315 D3 - L=12 m	10		22-May-26	05-Jun-26	-68
300	EX-665A-7860 Demolare podet existent incluz	2	0%	22-May-26	25-May-26	-98
301	EX-665A-7870 Montare si monolitizare eleme	2	0%	29-May-26	02-Jun-26	-98
302	EX-665A-7880 Fundatie podet	3	0%	26-May-26	28-May-26	-98
303	EX-665A-7890 Montare si monolitizare Arpa A1	2	0%	03-Jun-26	04-Jun-26	-98
304	EX-665A-7900 Hidrozolatie podet	1	0%	05-Jun-26	05-Jun-26	-98
305	EX-665A-7330 Turnare beton de parita	1	0%	03-Jun-26	03-Jun-26	-97
306	Stati Autobuz	8		13-Nov-26	24-Nov-26	29
307	EX-665A-5270 Sapatura	1	0%	13-Nov-26	13-Nov-26	29
308	EX-665A-5280 Strat format nisip - 7 cm, dupa compactare	1	0%	16-Nov-26	16-Nov-26	29
309	EX-665A-5290 Fundatie balast - 30 cm, dupa compactare	2	0%	16-Nov-26	17-Nov-26	29
310	EX-665A-5300 Piatra Sparta - 20 cm, dupa compactare	2	0%	17-Nov-26	18-Nov-26	29
311	EX-665A-5310 BAD 22.4 - 6 cm (inclusiv spor de nivelare)	1	0%	19-Nov-26	19-Nov-26	29
312	EX-665A-5320 Amorsare P.S.+BAD 22.4 cu	1	0%	18-Nov-26	18-Nov-26	30
313	EX-665A-5330 BA 16 sau BAR 16 - 4 cm	1	0%	20-Nov-26	20-Nov-26	29
314	EX-665A-5340 Adaposturi pentru calatori	2	0%	23-Nov-26	24-Nov-26	29
315	Scurgere Apelor	38		21-Aug-26	13-Oct-26	33
316	EX-665A-5980 Sant peresit (fara acostament)	28	0%	04-Sep-26	13-Oct-26	33
317	EX-665A-6940 Rigola carosabila D=65 cm +	10	0%	21-Aug-26	03-Sep-26	33
318	Acces la Proprietati	45		21-Dec-26	25-Feb-27	-101

■ Activities ■ Actual Work ■ Critical Remaining Work ▶ Critical
■ Critical ■ Remaining Work ◆ Milestone

